

Are you Seeking Asylum??

JOIN US ASYLUM PROGRAM ORIENTATION

MONDAY'S 1:00-3:00 PM

Location:

4040 S.188th St. Suite 100

SeaTac, WA 98188

If you have applied for asylum or you would like to apply for asylum, you may be eligible for services to help you better adjust to the United States.

The **Asylum Assistance Program** helps connect you to eligible benefits and services as well as helps connect you with medical care and immigration assistance.

To Schedule an Appointment: You will **FIRST** need to attend our **2 hour orientation** where you will learn about the asylum process, and what the asylum program can assist you with as you go through your case. After the orientation you will be scheduled with one of our asylum case managers for an appointment.

*If you do not speak English you can bring someone who can help to translate.

IF GRANTED ASYLUM NO ORIENTATION IS NEEDED

Program Contacts:

Nichole Lundin:

206-602-1346

NLUNDIN@LCSNW.ORG

Pheline Malela:

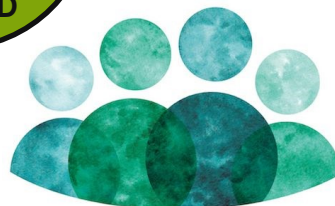
206-816-3236

PMALEIA@REFUGEEESNW.ORG

Bayan Shwan:

206-816-3240

BSHWAN@LCSNW.ORG



refugees
NORTHWEST

A PROGRAM OF
Lutheran Community Services Northwest